



# 2018 Primary Elections Miami-Dade Voter Guide

Compare candidates by their answers Vote your values on Tuesday, August 28<sup>th</sup>

VOTE BY MAIL: Absentee ballots mailed out Wednesday, July 31st VOTE EARLY: Early voting begins Monday, August 13th VOTE ON ELECTION DAY: Tuesday, August 28<sup>th</sup> Don't forget to bring photo ID with you. Visit cfcflorida.net for early voting sites. Bring this guide with you to the polls, it's your legal right!

## STATE SENATE / SENADO ESTATAL

ANSWER KEY: **S** = SUPPORTS APOYA **O** = OPPOSES SE OPONE **N/A** = NO ANSWER NO RESPUESTA  
 Clave de respuestas: **S** = APOYA **O** = SE OPONE **N/A** = NO RESPUESTA

= Highly Qualified / Altamente calificado.

1 Prayer in school Oración en las escuelas	<b>S</b>	<b>N/A</b>
2 Prohibit taxpayer funding of abortion Prohibir el financiamiento del aborto a los contribuyentes	<b>S</b>	<b>N/A</b>
3 Ban dismemberment abortion Prohibir el aborto por desmembramiento	<b>S</b>	<b>N/A</b>
4 Prohibit men from using women's bathrooms Prohibir a los hombres el uso de baños para mujeres	<b>S</b>	<b>N/A</b>
5 Prohibit discrimination against wedding vendors who decline services for homosexual weddings Prohibir la discriminación contra los proveedores de bodas que rechazan los servicios de bodas homosexuales	<b>S</b>	<b>O</b>
6 Allow doctors to counsel minors with unwanted homosexual/ transsexual confusion Permitir que los médicos aconsejen a los menores con confusión homosexual / transexual no deseada	<b>S</b>	<b>N/A</b>

## DISTRICT 38



Daphne Campbell Jason Pizzo

1 Prayer in school Oración en las escuelas	<b>S</b>	<b>N/A</b>
2 Prohibit taxpayer funding of abortion Prohibir el financiamiento del aborto a los contribuyentes	<b>S</b>	<b>N/A</b>
3 Ban dismemberment abortion Prohibir el aborto por desmembramiento	<b>S</b>	<b>N/A</b>
4 Prohibit men from using women's bathrooms Prohibir a los hombres el uso de baños para mujeres	<b>S</b>	<b>N/A</b>
5 Prohibit discrimination against wedding vendors who decline services for homosexual weddings Prohibir la discriminación contra los proveedores de bodas que rechazan los servicios de bodas homosexuales	<b>S</b>	<b>O</b>
6 Allow doctors to counsel minors with unwanted homosexual/ transsexual confusion Permitir que los médicos aconsejen a los menores con confusión homosexual / transexual no deseada	<b>S</b>	<b>N/A</b>

## ATTORNEY GENERAL / FISCAL GENERAL

ANSWER KEY: **S** = SUPPORTS APOYA **O** = OPPOSES SE OPONE **N/A** = NO ANSWER NO RESPUESTA  
 Clave de respuestas: **S** = APOYA **O** = SE OPONE **N/A** = NO RESPUESTA

= Highly Qualified / Altamente calificado.

1 Prohibit discrimination against pro-life doctors and nurses who refuse to participate in an abortion Prohibir la discriminación contra los médicos y las enfermeras pro-vida que se niegan a participar en un aborto	<b>S</b>	<b>S</b>	<b>N/A</b>	<b>N/A</b>
2 Allow Governor Rick Scott to name three new justices to the Florida Supreme Court before leaving office Permitir que el gobernador Rick Scott nombre tres nuevos jueces ante la Corte Suprema de Florida antes de dejar el cargo	<b>S</b>	<b>S</b>	<b>N/A</b>	<b>N/A</b>
3 Prohibit men from using women's bathrooms Prohibir a los hombres el uso de baños para mujeres	<b>S</b>	<b>S</b>	<b>N/A</b>	<b>N/A</b>
4 Prohibit discrimination against wedding vendors who decline services for homosexual weddings Prohibir la discriminación contra los proveedores de bodas que rechazan los servicios de bodas homosexuales	<b>S</b>	<b>S</b>	<b>N/A</b>	<b>N/A</b>

## ATTORNEY GENERAL / FISCAL GENERAL



Ashley Moody Frank White Sean Shaw Ryan Torrens

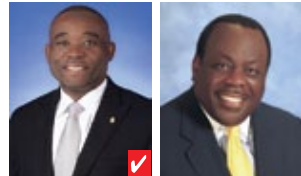
## BOARD OF COUNTY COMMISSIONERS JUNTA DE COMISIONADOS DEL CONDADO

ANSWER KEY: **S** = SUPPORTS APOYA **O** = OPPOSES SE OPONE **N/A** = NO ANSWER NO RESPUESTA  
 Clave de respuestas: **S** = APOYA **O** = SE OPONE **N/A** = NO RESPUESTA

= Highly Qualified / Altamente calificado.

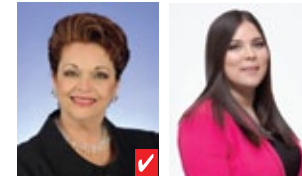
1 Prayer before County Commission meetings Oración antes de las reuniones de la Comisión del Condado	<b>S</b>	<b>N/A</b>	<b>S</b>	<b>N/A</b>	<b>S</b>	<b>S</b>	<b>N/A</b>	<b>N/A</b>	<b>N/A</b>	<b>S</b>	<b>S</b>	<b>N/A</b>	<b>S</b>	<b>S</b>	<b>S</b>
2 Allow doctors to counsel minors with unwanted homosexual/ transsexual confusion Permitir que los médicos aconsejen a los menores con confusión homosexual / transexual no deseada	<b>S</b>	<b>N/A</b>	<b>S</b>	<b>N/A</b>	<b>S</b>	<b>Undecided</b>	<b>O</b>	<b>N/A</b>	<b>N/A</b>	<b>S</b>	<b>S</b>	<b>N/A</b>	<b>S</b>	<b>S</b>	<b>S</b>

## DISTRICT 2



Jean Monestime Dorrin D. Rolle

## DISTRICT 6



Rebeca Sosa Maryin Vargas

## DISTRICT 8



Gus A. Barreiro Jonathan A. Burke Daniella Levine C.

## DISTRICT 10



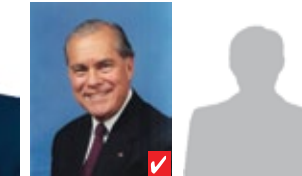
Jose Garrido Julio C. Sanchez Alfred Santamaria Javier D. Souto Roberto Suarez Jr.

## DISTRICT 10



Jose 'Pepe' Diaz Patricio Moreno Rafael A. Pineyro

## DISTRICT 12



## SCHOOL BOARD MEMBER MIEMBROS DE LA JUNTA ESCOLAR

ANSWER KEY: **S** = SUPPORTS APOYA **O** = OPPOSES SE OPONE **N/A** = NO ANSWER NO RESPUESTA  
 Clave de respuestas: **S** = APOYA **O** = SE OPONE **N/A** = NO RESPUESTA

= Highly Qualified / Altamente calificado.

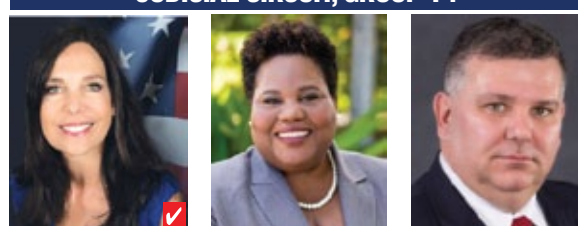
1 Prayer in schools Oración en las escuelas	<b>O</b>	<b>O</b>
2 Abstinence education Educación sobre la abstinencia	<b>N/A</b>	<b>O</b>
3 Prohibit men from using women's bathrooms Prohibir a los hombres el uso de baños para mujeres	<b>N/A</b>	<b>O</b>

## DISTRICT 2



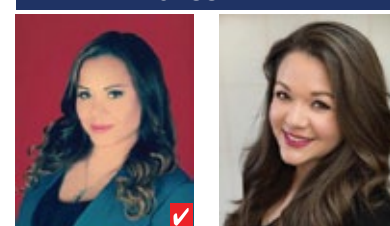
Brandon Alfred Dorothy Bendross-M.

## CIRCUIT JUDGE, 11th JUDICIAL CIRCUIT, GROUP 14



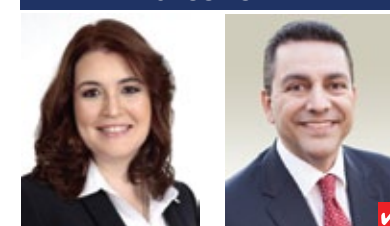
Vivianne del Rio Renee Gordon Louis V. Martinez

## COUNTY JUDGE GROUP 2



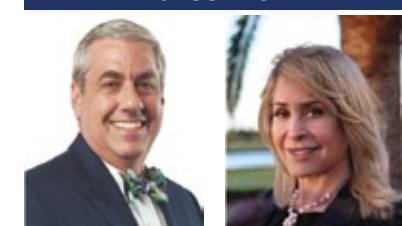
Rosy Annette Aponte Kristy Nuñez

## COUNTY JUDGE GROUP 32



Lizzet Martinez Christopher Pracitto

## COUNTY JUDGE GROUP 40



Michael Barket Elena Ortega-T.

**N/A:** IF A RACE IS NOT LISTED ON THIS VOTER GUIDE IT IS BECAUSE EITHER THE CANDIDATES REFUSED TO ANSWER THE QUESTION(S), OR AFTER MULTIPLE ATTEMPTS TO REACH THE CANDIDATES BY PHONE OR EMAIL, THEY DID NOT GET BACK TO US, OR THEY CONTACTED US AFTER THE PUBLISHING DEAD LINE

Paid for and authorized by Christian Family Coalition (CFC) Florida. The Voter Guide is provided for educational purposes only and is not to be construed as an endorsement of any candidate or political party. Please bring this voter guide with you to the polls. Voter Guide duplication is permitted and encouraged.

For additional copies, please contact the Christian Family Coalition Florida at (786)447-6431. A copy of this Voter Guide is available for viewing and downloading at: [www.CFCflorida.net](http://www.CFCflorida.net)